

Bill of Materials

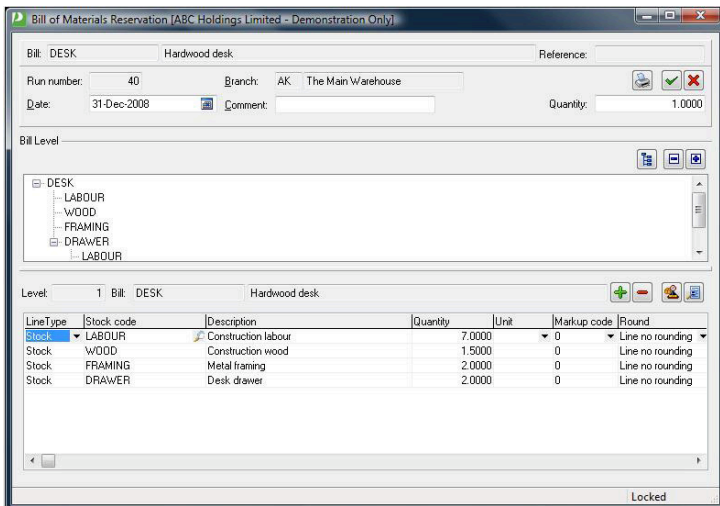
Gain control of your manufacturing requirements

Managing manufacturing requirements can be complex and time consuming. The Attaché PRO Bill of Materials module can help you to tame this beast. With support for multiple levels of components and nesting sub-bills, you will be able to clearly define the components and automate the processes of production and stock reservation saving you time and effort.

Key benefits

Attaché PRO Bill of Materials reduces the process of managing your manufacturing to a few simple processes.

- Multi level Bill templates allow you to define each Bill with sub components containing other Bills.
- Reserve stock, sets aside the required quantities of component parts so that they are not sold separately during the production process.
- Production Run, using the bill templates the production run reduces stock quantities for the components and increases stock for the finished goods.
- Disassemble reverses a manufacture so that you can roll back the data when circumstances change.
- Drill Down – When a production run occurs the system will create an audit trail of what happened. Later you can use drill down to see the production details.
- Alternate Components – Define alternative components to use when there is insufficient stock of one or more components.
- Automated re-costing will recalculate the total Bill cost from the component parts.
- Extensive reporting options.

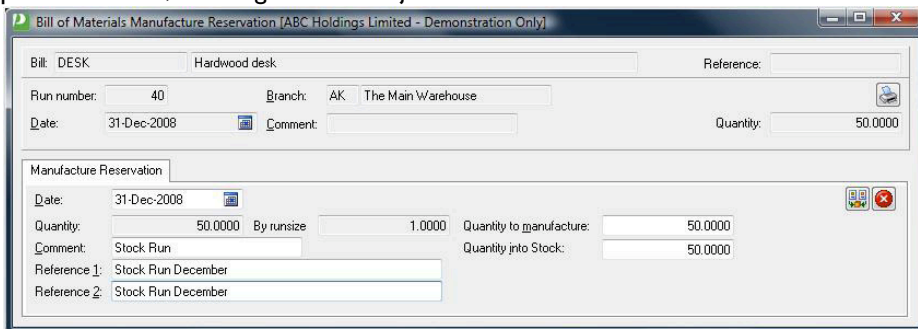


Bill Template Definition

Multi Level Bill templates allow you to define each Bill with sub components containing other Bills. There are no limits to the depth of the bill levels or constraints on the complexity other than the specifications of your PC. Define components as Standard or Overhead usage allowing for items such as set up job costs where the overhead costs are the same regardless of the quantity being manufactured. The Attaché PRO Bill of Materials module allows you to define a run size to determine how many items will be added into stock for the manufacture of each Bill template. The overall cost of a bill can be calculated from the sum of the component parts and you can also define markups of the components.

Reservations

The reservations function will set aside stock of your components so that items which are both components and finished goods are not sold before they are used by the manufacturing process. You may also modify the standard template for a one off production run, allowing for custom jobs.



Production Run

The Production Run allows you to easily convert reservations into actual manufactures, thus moving the stock quantities from reserved to actual quantities. Or you can produce stock using a Bill template and skip the reservation stage. It is also possible to detail wastage and have the system generate the appropriate transactions.

Disassemble

Disassemble reverses a manufacture so that you can roll back the data when circumstances change. It is also possible to perform a partial disassemble if you don't wish to reverse the manufacture for the same quantity. With the BoM history, you can also select an existing manufacture for point and click reversal, ensuring that any variances in the standard bill template and any alternate components used during the original production are taken into account when reversing.

Alternate Components

Using the alternate components feature you can define components to use if there is insufficient stock of the standard component. For example, if you could use stainless steel washer instead of a galvanised washer.

Module integration

The Bill of Materials module keeps a count of the quantities reserved for manufacture, so you can see within other modules such as Sales Order Entry why the component is not available to sell. This gives you the option to reverse a reservation and sell the stock if you choose to. The Bill of Materials module can also update the General Ledger WIP accounts as part of the monthly accounting requirements. Updates to the Inventory Control module show a full audit trail of usage, wastage and production from BoM.

- General Ledger
- Cashbook
- Accounts Receivable
- Accounts Payable
- Inventory Control
- Special Pricing
- Fixed Assets
- Bill of Materials
- Sales Order Entry
- Sales Analysis
- Purchase Ordering
- Purchase Analysis
- Foreign Currency
- Payroll
- Alex
- Report Designer
- Data Transfer
- FlexiData
- ODBC
- OLE DB
- Archiver
- Scheduling



Attaché Software New Zealand Pty. Limited
Level 5, 93 Grafton Road, Parnell, Auckland
PO Box 37-623, Parnell, Auckland
Tel + 64 9 302 9390
Fax + 64 9 302 9391

Attaché Software Australia Pty. Limited
18 Berry Street, North Sydney NSW 2060
PO Box 1070, North Sydney NSW 2059
Tel + 61 2 9929 8700
Fax + 61 2 9925 0481

Email sales@attache.co.nz
Website www.attachepro.com